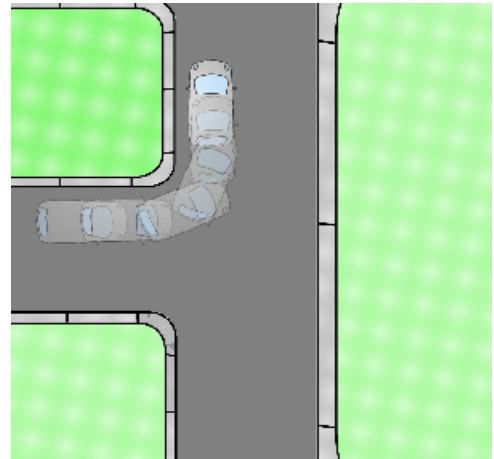


Reversing around a corner



If the road you are in is too narrow for a 3 point turn, you may need to reverse left (or right) into a side road to turn the car around. In your driving test you will be asked to reverse left.



You will be required to stay reasonably close to the kerb (1 metre); to take effective observation (*if another vehicle is there, you need to see it*); and to keep full control of the vehicle throughout.

The manoeuvre should be completed in about a 90 seconds.

However, if your examiner selects a busy road it may take slightly longer. This is because you will need to give way more often to other road users.

Basics:

- Identify the type of corner. Is it sharp, or wide, and rounded?
- Start about a drain width (1ft, 35cm) from the kerb. Slightly more if the corner is sharp.
- Reverse to your Turning Point (when your back nearside wheel is next to the first curved kerbstone).
- Check Behind (left and right) before steering
- Steer left. How much? It depends how sharp the corner is
- When you are around the corner then the new kerb will be near the centre of the rear windscreen and you will be parallel to the kerb
- Finish with your wheels straight, and with the car perfectly parallel with the kerb. Show the examiner that you can reverse in a straight line by reversing into the new road for 4 or 5 car lengths.
- Give way to any road users who do not give way to you. You DO NOT have priority. .



Technique

Make sure that you **turn around in your seat** so that you can see clearly through the rear windscreen. You should be turned around so much that, if there were a car parked behind you, you would be able to read its number plate. How much you steer depends on the type of corner.

Estimate the initial turn and keep it slow (the speed of an old man walking) so that you can add or subtract steering (lock) as you go.

Use your left mirror AND your rear windows to keep sight of the kerb.

After the initial turn, add or subtract in quarter turns of the steering wheel. Straighten the wheels when the new kerb is near the middle of the rear windscreen

In my experience this manoeuvre is fairly simple as long as you look mainly through the rear windows. Using the mirrors too much tends to cause confusion with which way the wheels are turned. It may take a bit of practice so don't worry if you don't get it first time. Try to find a really quiet corner to begin with so you can have 10 goes without too much interruption from other road users, and without disturbing residents!