

Crossroads



Crossing major roads

Approaching crossroads please look out for give way signs, and give way road markings.

Note: In heavy rain the road markings may be concealed!

Ask: is it an open junction or a closed junction? If it is closed then use gear 1, and take great care crossing the major road. If it is open, then you may be able to assess the traffic on the approach. But remember, 99% of junctions in cities are closed, because parked cars and buildings are in the way. It is unlikely that you could cross safely without coming to an almost complete stop.



Passing through on the major road

If you are approaching a crossroad on the major road, regardless of whether you are turning, drive defensively. Other road users can, and do, make mistakes. Glance left and right to assess the behaviour of others.

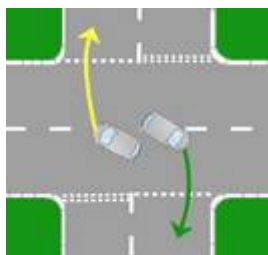
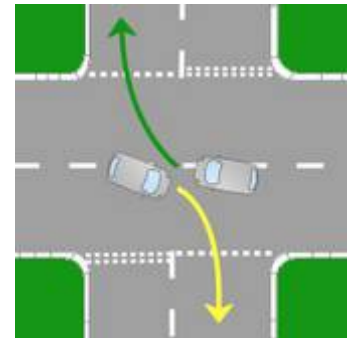
Turning right

If you intend to turn right, then be aware of oncoming vehicles which may also want to turn right. You may need to pass them in a special way.

Nearside to nearside

The problem with crossing in front (nearside to nearside) is that you may not be able to see what is approaching. You may need to creep forward to get a better view, being careful that you don't deprive the oncoming traffic of space.

Note: the passenger side of the car is called the nearside. The driver's side is called the offside.



Offside to offside

This way of passing oncoming traffic has become less common. You may find that this happens where the minor roads are slightly staggered. The benefit of passing this way is that you can see what is coming, and more easily judge when to turn. If you need to queue, do so without blocking either oncoming traffic or pedestrians.

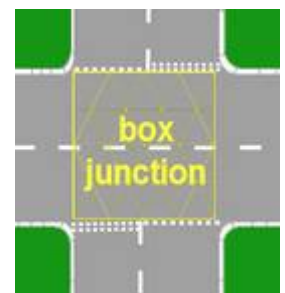
Box Junctions and Queueing

When the junction gets busy, you may need to queue. Look out for box junctions.

The rules:

- ◆ If you cannot escape from the box, then you may not enter it
- ◆ You may wait in a box junction if you are turning right, and if you are prevented from turning right only by oncoming vehicles

Note: All junctions should be kept clear when queueing. However, yellow boxes are painted at particularly congested junctions.



When queuing to turn right at traffic lights you need to stay highly alert. When the lights change you may have only seconds to complete your turn before the vehicles to your left and right begin to move toward you.